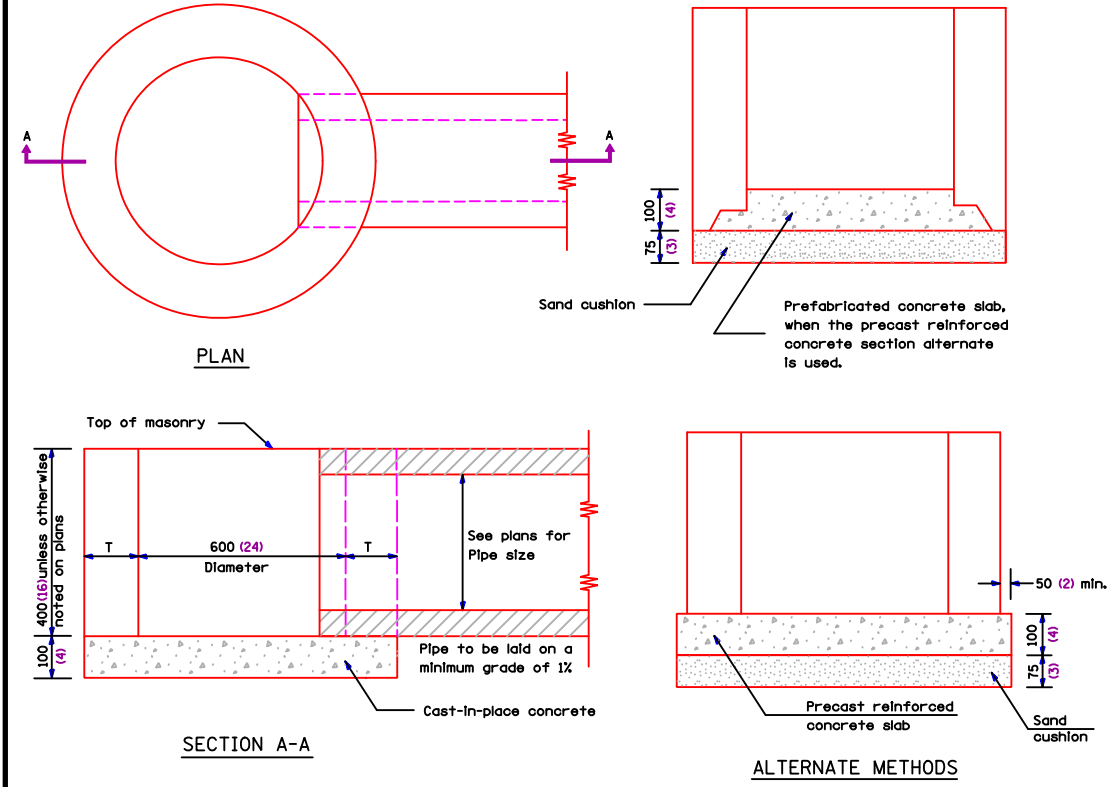


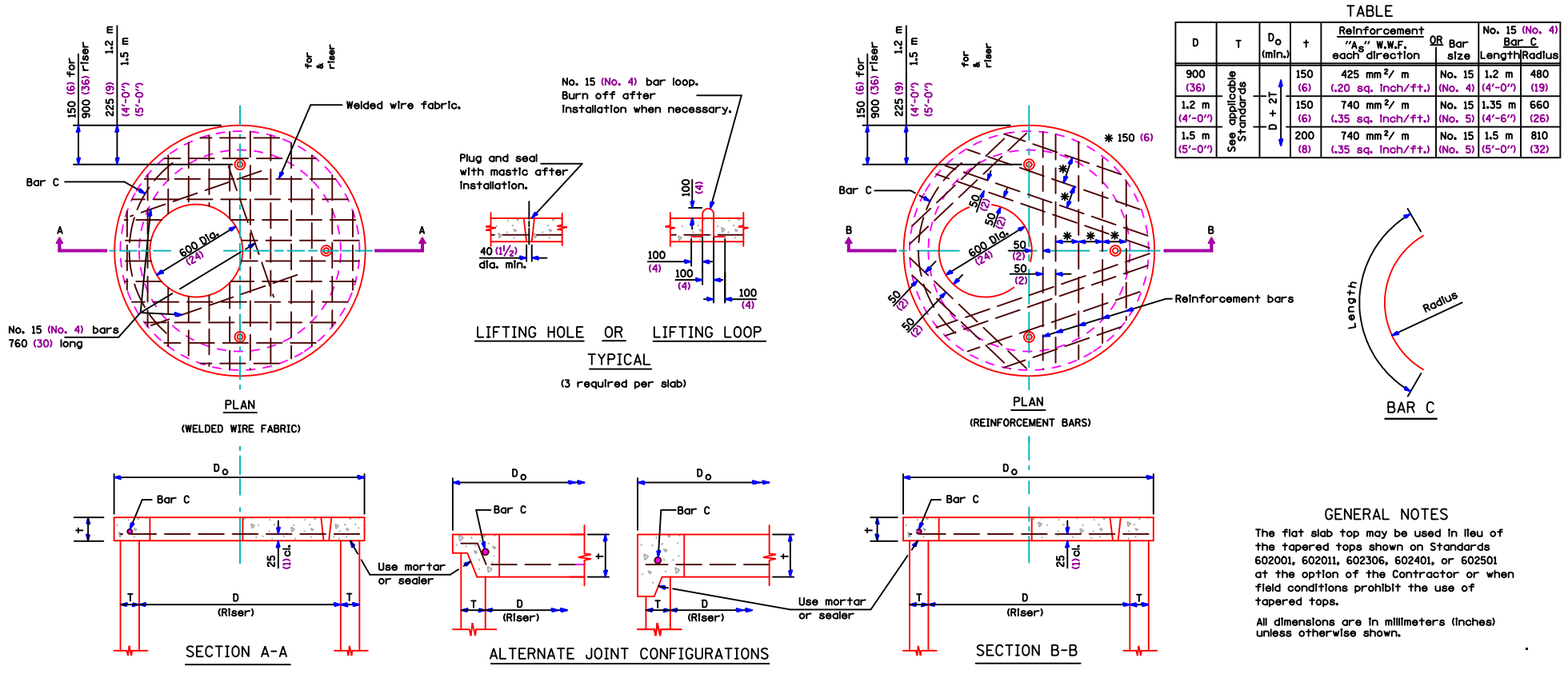
| MATERIALS FOR WALLS | T |
|-------------------------------------|--------|
| PRECAST REINFORCED CONCRETE SECTION | 75 (3) |



INLET - TYPE A

All dimensions are in millimeters (inches) unless otherwise shown.

| MATERIALS FOR WALLS | T |
|-------------------------------------|--------|
| PRECAST REINFORCED CONCRETE SECTION | 75 (3) |



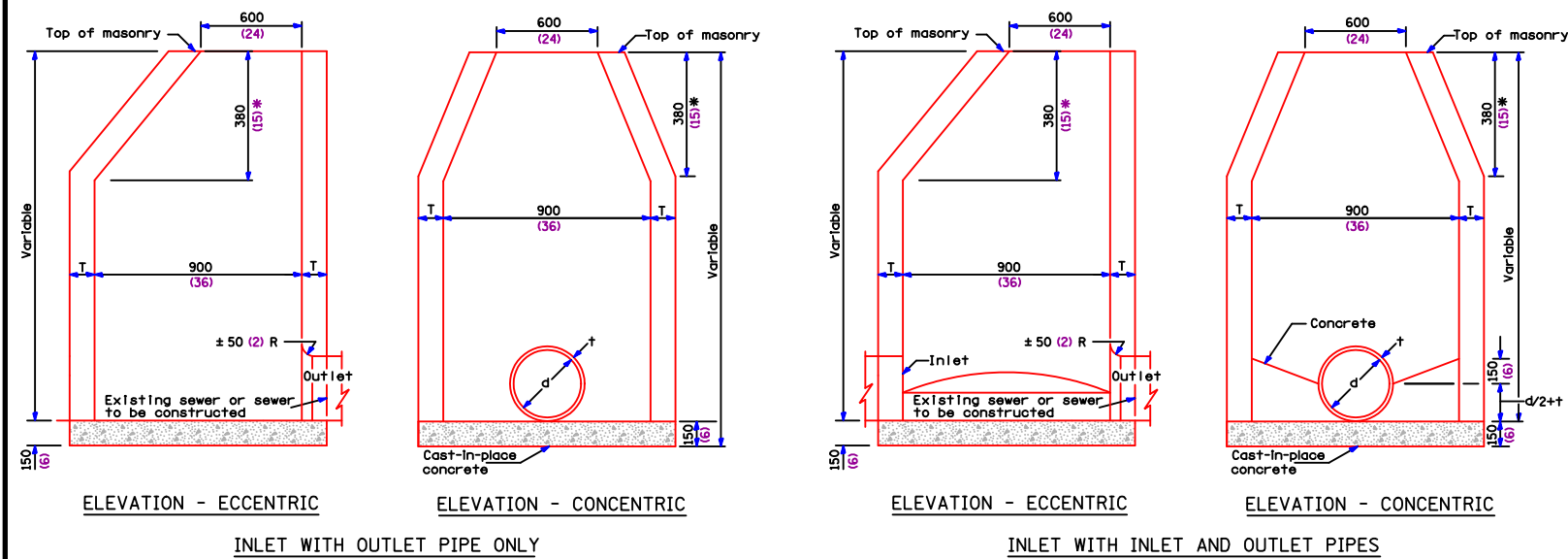
PRECAST REINFORCED CONCRETE FLAT SLAB TOP

| TABLE | | | | | | |
|---------------|--------------------------|-----------------------|---------|---|----------------|----------------------------------|
| D | T | D _o (min.) | t | Reinforcement "A" W.W.F. each direction | OR Bar size | No. 15 (No. 4) Bar Length/Radius |
| 900 (36) | See applicable Standards | 150 (6) | 150 (6) | 425 mm ² /m (.20 sq. Inch/ft.) | No. 15 (No. 4) | 1.2 m (4'-0") (19) |
| 1.2 m (4'-0") | | 150 (6) | 150 (6) | 740 mm ² /m (.35 sq. Inch/ft.) | No. 15 (No. 5) | 1.35 m (4'-6") (26) |
| 1.5 m (5'-0") | | 200 (8) | 200 (8) | 740 mm ² /m (.35 sq. Inch/ft.) | No. 15 (No. 5) | 1.5 m (5'-0") (32) |

GENERAL NOTES

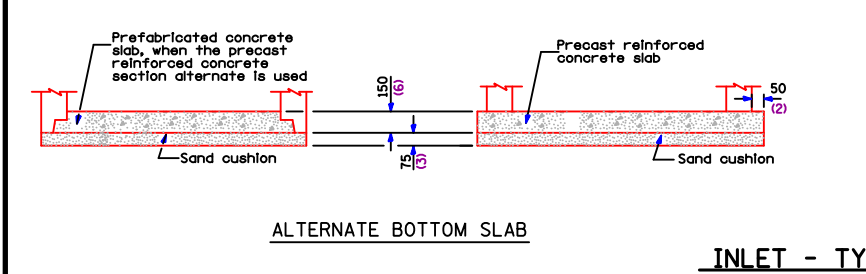
The flat slab top may be used in lieu of the tapered tops shown on Standards 60201, 602011, 602306, 602401, or 602501 at the option of the Contractor or when field conditions prohibit the use of tapered tops.

All dimensions are in millimeters (inches) unless otherwise shown.



INLET WITH OUTLET PIPE ONLY

INLET WITH INLET AND OUTLET PIPES



INLET - TYPE B

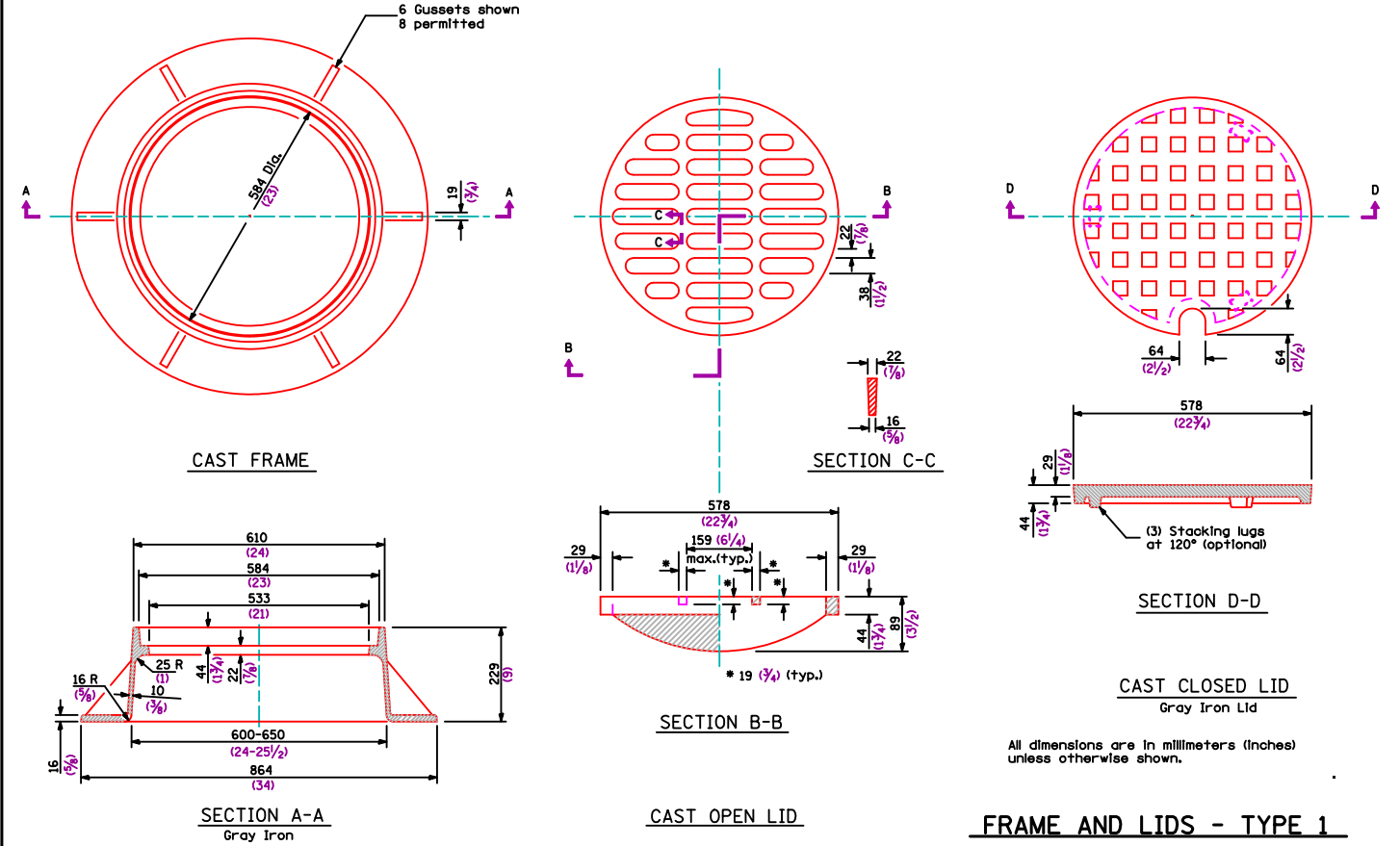
| ALTERNATE MATERIALS FOR WALLS | T (min.) |
|-------------------------------------|----------|
| Concrete Masonry Unit | 125 (5) |
| Brick Masonry | 200 (8) |
| Precast Reinforced Concrete Section | 75 (3) |
| Cast-In-Place Concrete | 150 (6) |

GENERAL NOTES

* This dimension for Precast Reinforced Concrete Sections may vary from the dimension given to plus 150 mm (6").

See Standard 602601 for Optional Precast Reinforced Concrete Flat Slab Top.

All dimensions are in millimeters (inches) unless otherwise shown.



FRAME AND LIDS - TYPE 1

All dimensions are in millimeters (inches) unless otherwise shown.

| REV | DATE | DESCRIPTION |
|-----|------|-------------|
| | | |
| | | |
| | | |
| | | |

NAME/DATE:

Village of Hamel

111 South Old U.S. 66 • P.O. Box 945 • Hamel, Illinois 62046
(618) 638-2484

VILLAGE OF HAMEL
STANDARD SPECIFICATIONS
FOR TYPICAL STORM SEWER CONSTRUCTION DETAILS

SHEET NO.
T-3