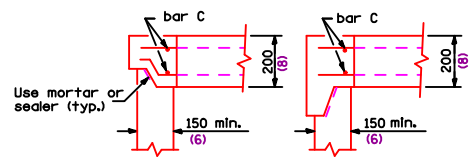
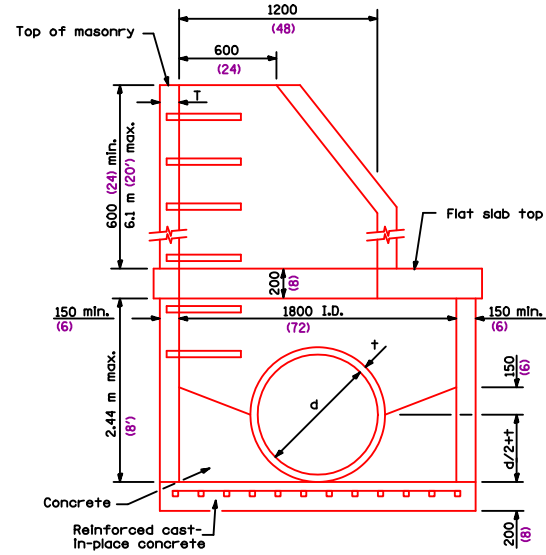


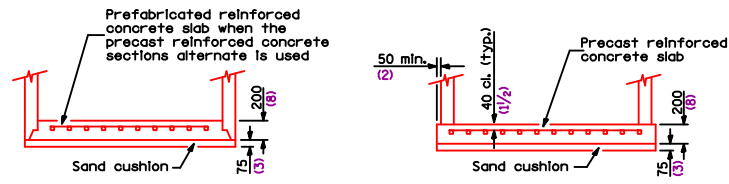
ELEVATION



ALTERNATE JOINT CONFIGURATIONS



ELEVATION



ALTERNATE BOTTOM SLABS

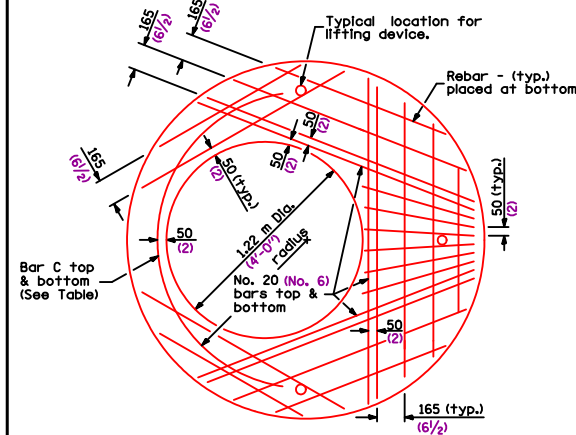
ALTERNATE MATERIALS FOR WALLS		T
		(min)
Precast Reinforced Concrete Sections		100 (4)

GENERAL NOTES

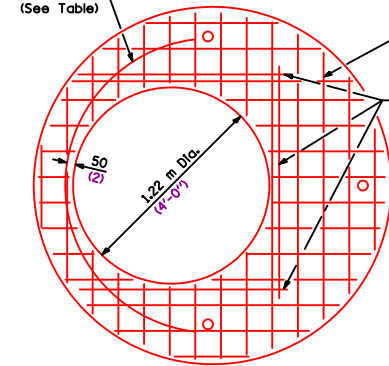
Joint configuration and dimensions of flat slab top shall match and fit the riser joint detail.  
 Lifting devices shall be approved by the Engineer.  
 Bottom slabs shall be reinforced with a minimum of 975 mm<sup>2</sup>/m (0.46 sq. in./ft.) in both directions.  
 See Standard 602701 for details of cast iron steps.

All dimensions are in millimeters (inches) unless otherwise shown.

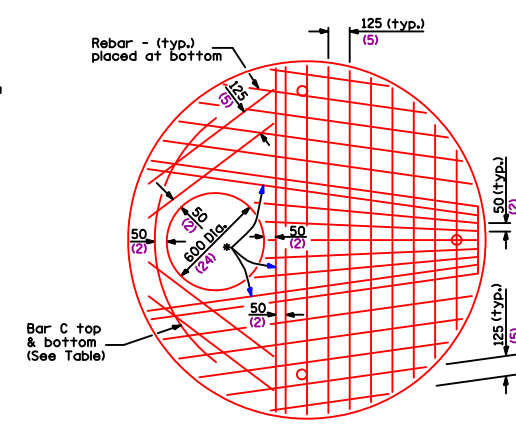
MANHOLE TYPE A 1800 mm (72") DIAMETER



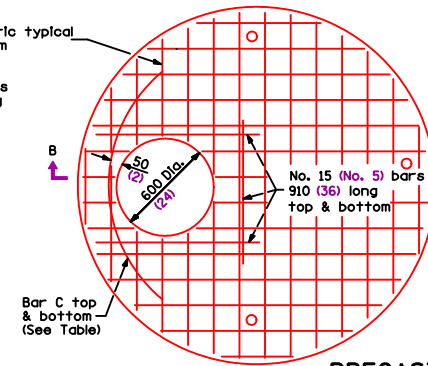
PLAN Showing Rebar Reinforcement



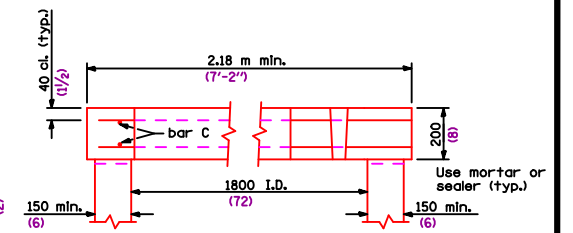
PLAN Showing Welded Wire Fabric Reinforcement



\* No. 20 (No. 6) bars top & bottom



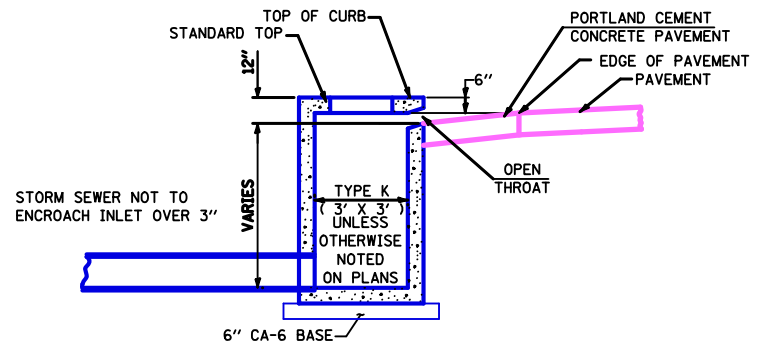
PRECAST REINFORCED CONCRETE FLAT SLAB TOP



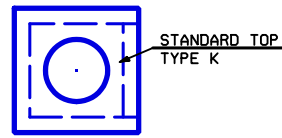
SECTION B-B

Diameter of opening	Thickness	Reinforcement "As" WWF Each direction	No. 15 (No. 4) Bar C	
			Bar Size	Length Radius
600 (24)	200 (8)	2244 mm <sup>2</sup> /m (1.06 sq. in./ft.)	No. 20 (No. 6)	1.83 m (6'-0") (38)
1.2 m (4'-0")	200 (8)	1736 mm <sup>2</sup> /m (0.82 sq. in./ft.)	No. 20 (No. 6)	2.74 m (9'-0") (38)

All dimensions are in millimeters (inches) unless otherwise shown.

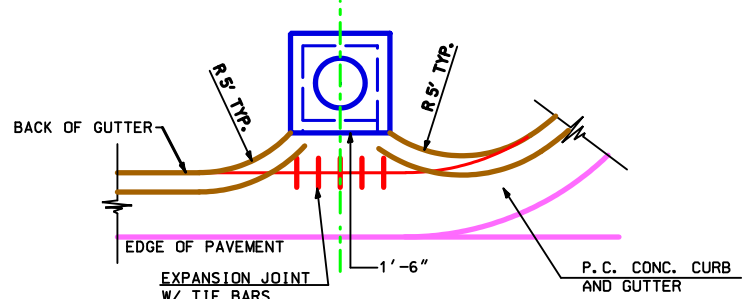


SECTIONAL VIEW



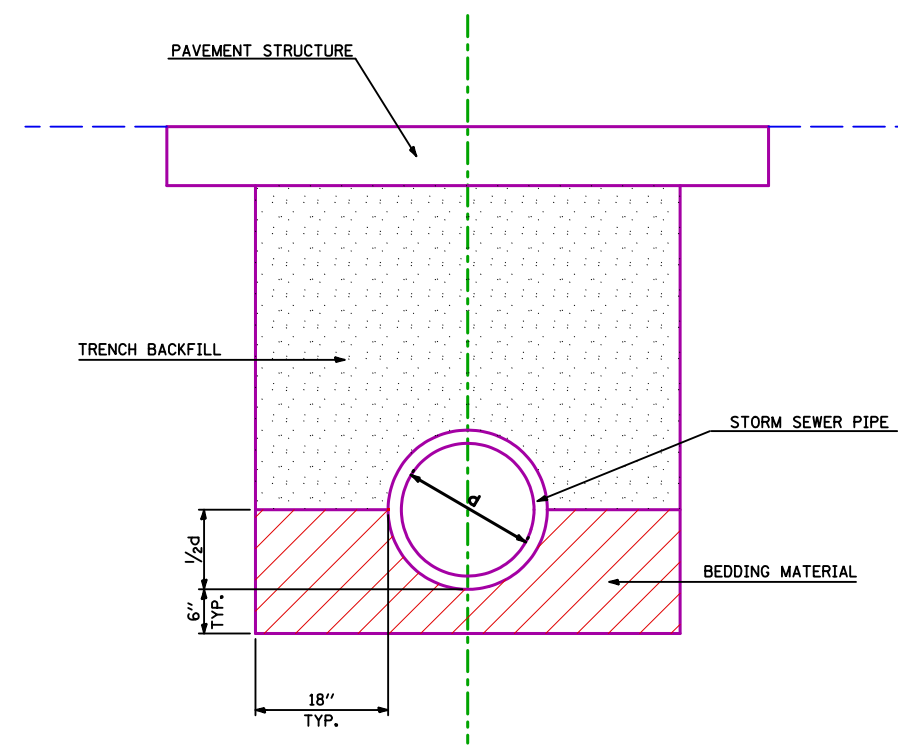
TOP VIEW

NOTE: 1. STANDARD TOP WITH NEENAH R-1960 FRAME AND I.D.  
 2. INLET TO BE KLUETER BROS. CONCRETE PRODUCTS, INC. OR EQUAL



PLAN VIEW

INLET - TYPE "K" NOT TO SCALE



TRENCH DETAIL FOR STORM SEWER INSTALLATION

(INSTALL, MEASURE AND PAY FOR IN ACCORDANCE WITH SECTION 208 AND SECTION 550)

REV	DATE	DESCRIPTION

NAME/DATE:

Village of Hamel

111 South Old U.S. 66 • P.O. Box 845 • Hamel, Illinois 62046  
 (618) 633-2484

VILLAGE OF HAMEL  
 STANDARD SPECIFICATIONS  
 FOR TYPICAL STORM SEWER CONSTRUCTION DETAILS

SHEET NO.

T-4