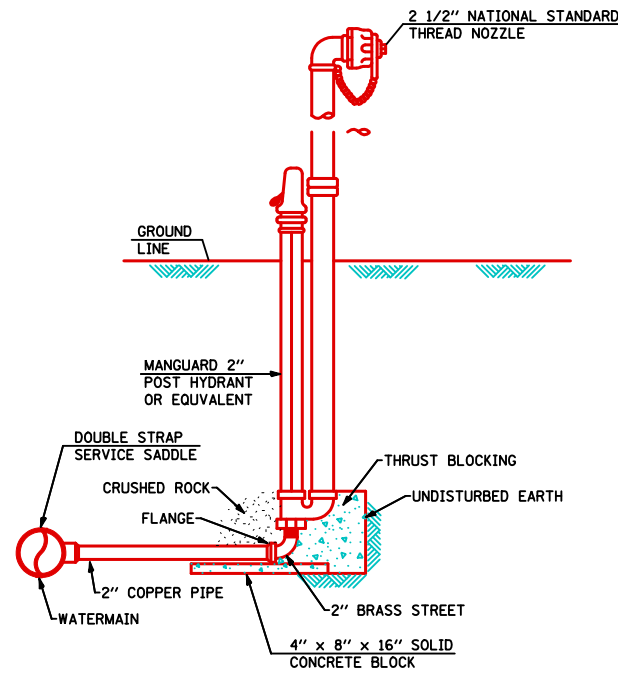
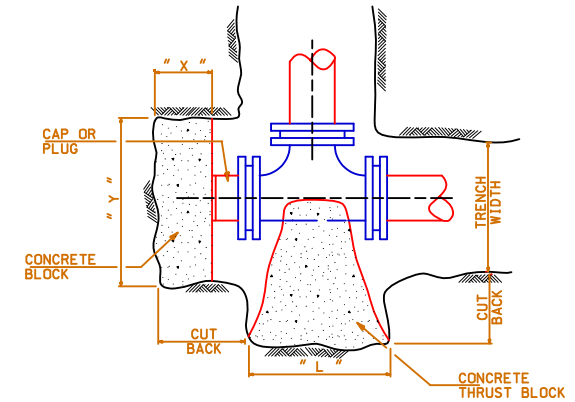


TYPICAL HYDRANT INSTALLATION



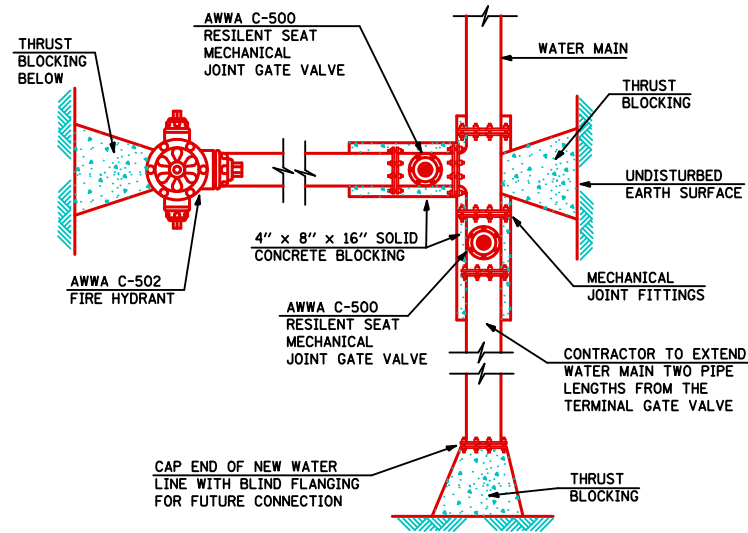
TYPICAL BLOW-OFF HYDRANT

THRUST BLOCKING SCHEDULE						
2,000#/S.F. SOIL SQ. FT. OF THRUST BLOCKING AREA REQUIRED						
PIPE SIZE	BENDS				TEES	
	1/4 OR 90°	1/8 OR 45°	1/16 OR 22 1/2°	1/32 OR 11 1/4°	CAP/PLUG	THRUST BLOCK
6"	2.00	1.20	—	—	1.50	1.50
8"	3.60	2.10	1.60	—	2.70	2.70
10"	5.60	3.20	2.60	2.10	4.30	4.30
12"	8.00	4.80	3.70	3.10	6.20	6.20
14"	11.00	7.30	5.00	4.20	8.40	8.40
18"	18.20	12.00	8.40	6.90	13.80	13.80

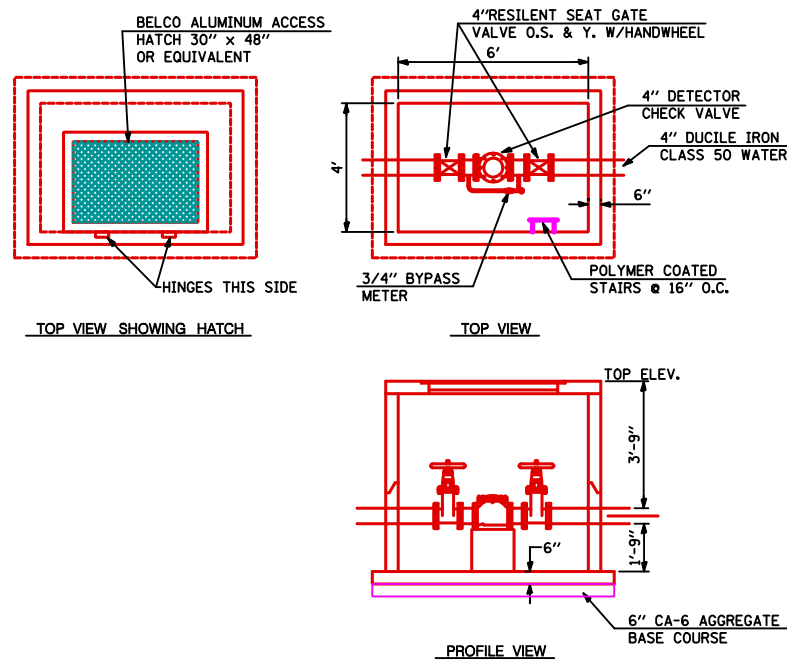


PLAN OF TEES

Y<sup>2</sup> = SQ. FT. OF THRUST BLOCK AREA  
 X = 1/3 x Y OR 8" WHICHEVER IS LARGER

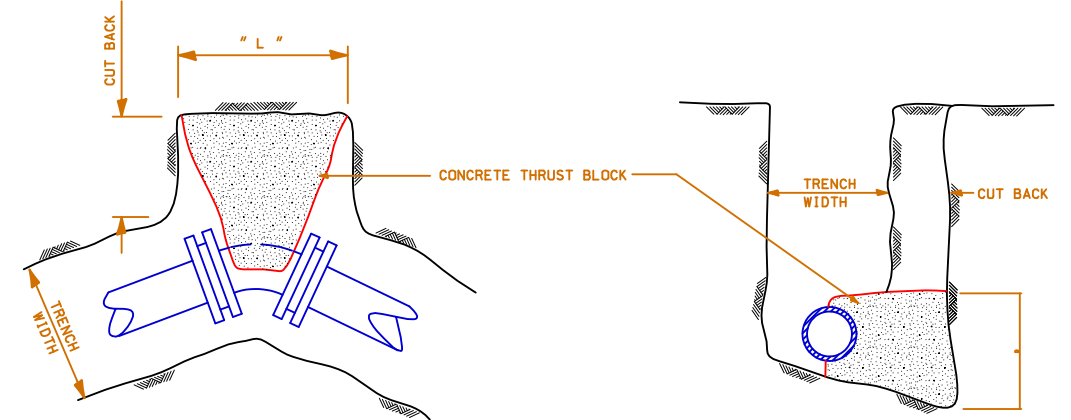


FIRE HYDRANT AND VALVE CONFIGURATION TO ALLOW PROPOSED EXTENSION OF WATER MAIN



DETECTOR CHECK VALVE AND VALVE VAULT DETAIL

SPECIFICATIONS:  
 ALL WORK, INSTALLATION, MATERIALS, EQUIPMENT AND TESTING SHALL CONFORM WITH THE LATEST EDITION OF THE ILLINOIS STANDARD SPECIFICATIONS FOR WATER AND SEWER MAIN CONSTRUCTION.



PLAN OF BENDS

SECTION

NOTE: THRUST BLOCKING AREA = L x D

REV	DATE	DESCRIPTION

NAME/DATE:

# Village of Hamel

111 South Old U.S. 66 • P.O. Box 345 • Hamel, Illinois 62046  
 (618) 638-2484

VILLAGE OF HAMEL  
 STANDARD SPECIFICATIONS  
 FOR TYPICAL WATER SYSTEM CONSTRUCTION DETAILS

SHEET NO.

T-6